

MONTHLY MEMBERSHIP PROGRESS REPORT

District 11 D2

Results as of: 6/30/2024

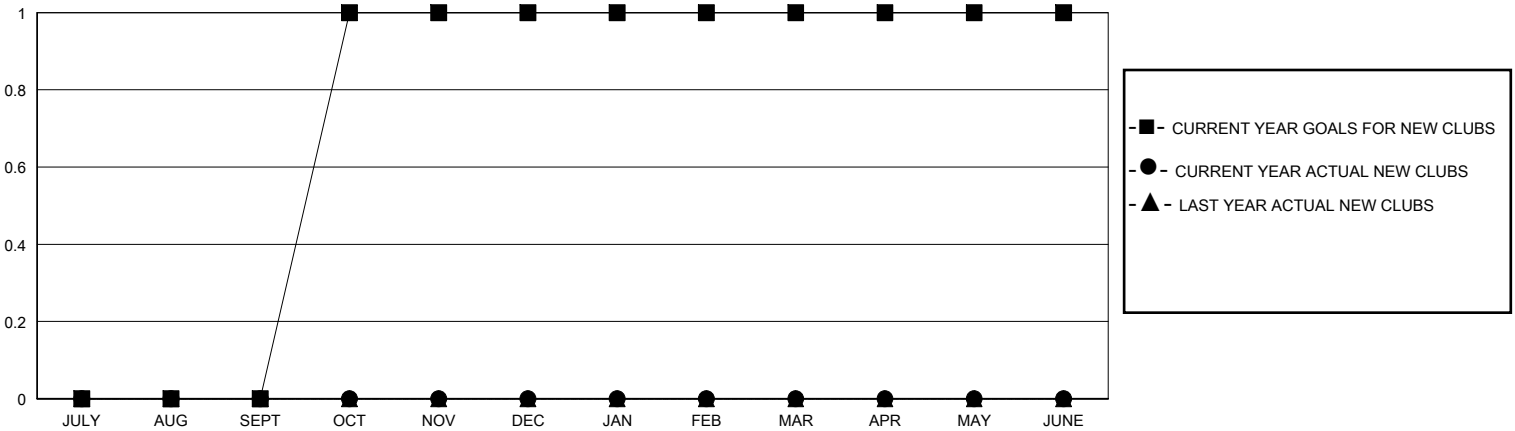
GMT:

LOCATION MICHIGAN

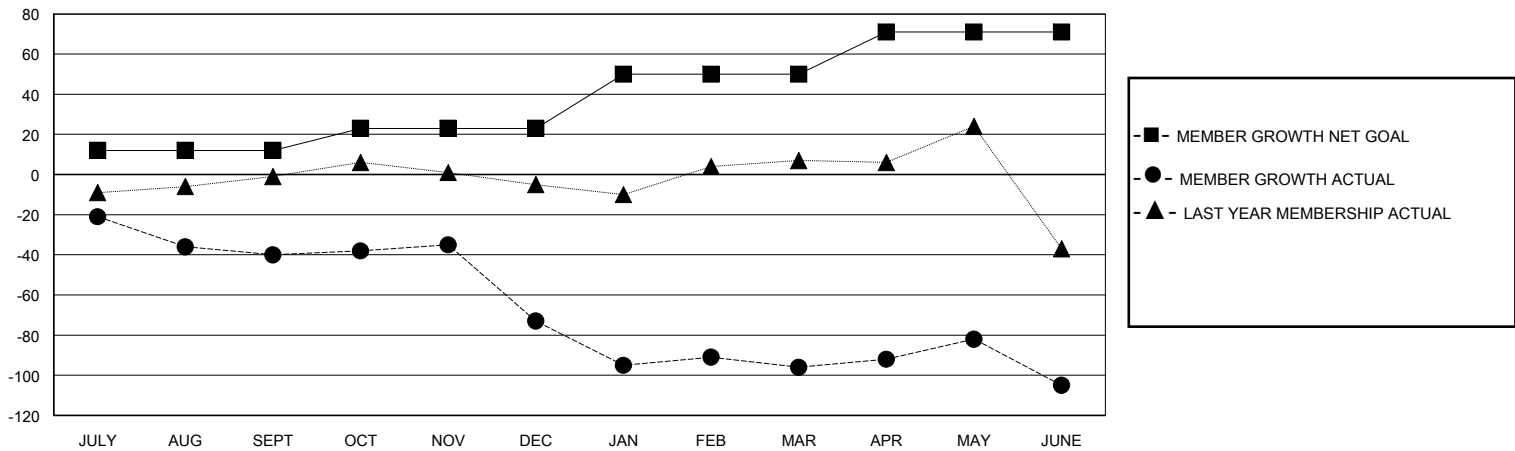
GMT CA

Clubs				Members			
RESULTS FOR 2023-2024				RESULTS FOR 2023-2024			
QUARTER	NEW CLUB GOAL	NEW CLUBS	DROPPED CLUBS	QUARTER	MEMBER GROWTH NET GOAL	MEMBER GROWTH ACTUAL	DROPPED MEMBERS ACTUAL (including transfers)
JULY/AUG/SEPT	0	0	0	JULY/AUG/SEPT	12	27	60
OCT/NOV/DEC	1	0	2	OCT/NOV/DEC	11	37	63
JAN/FEB/MAR	0	0	0	JAN/FEB/MAR	27	28	36
APR/MAY/JUNE	0	0	0	APR/MAY/JUNE	21	31	37

GOALS AND ACTUAL NEW CLUBS CUMULATIVE



GOALS AND ACTUAL MEMBERS CUMULATIVE



DROPPED CLUBS: 2	25 CLUBS OF 46 ADDED 1 OR MORE NEW MEMBERS	GENDER DISTRIBUTION MALE 863 (71.62%) FEMALE 341 (28.30%)
DROPPED MEMBERS DECEASED 17 CLUB CANCELLED 38 OTHER 141 TOTAL 196	CLICK HERE FOR CUMULATIVE MEMBERSHIP DATA	TOTAL FAMILY UNIT MEMBERS 169 FAMILY MEMBERS PAYING HALF DUES 87